



MATCH-3DX

MATCH-3DX MATCH-3DX MESHING-ADD-ON

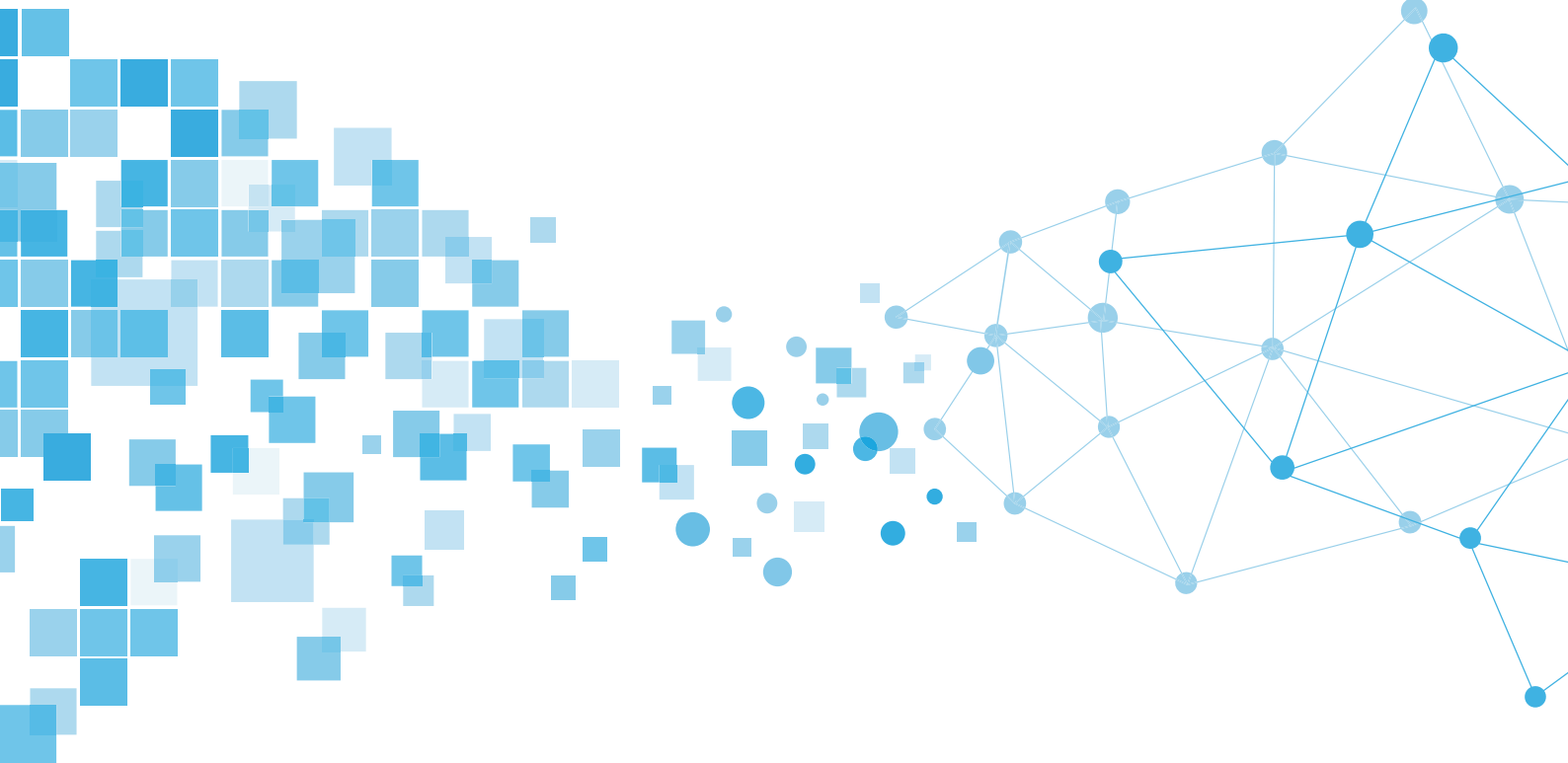
MATCH-3DX is a module in the software Inpho® for automatically generating three photogrammetry products: high quality dense point cloud based on Semi-Global-Matching algorithm, high quality true-orthophoto and high quality 3D meshes using Meshing-Add-On.

MATCH-3DX includes the full capability of MATCH-T DSM.

Using the advantageous tile management export tool in MATCH-3DX the final true-orthophotos can be exported in arbitrary areas, tiles or pixel sizes.

Key Benefits

- ▶ Completely automatic workflow for true orthophoto production directly from the dense point cloud, without ortho-rectifying the aerial images
- ▶ Minimizing the user interaction in comparison to the traditional, time-consuming and expensive workflow for true-orthophoto production
- ▶ No need to consider pre-measured morphological data (breaklines, 2D and 3D exclusion areas, borderlines)
- ▶ Can be combined with the classical orthophoto generation workflow (MATCH-T DSM)
- ▶ Extracts the colorized point cloud and creates realistic textured 3D-meshes directly from the aerial images
- ▶ 3D-meshes represent the geometry of the objects with triangles
- ▶ Textures on the meshes represent the object with photo realistic content for optimal interpretation
- ▶ Tight integration into point-cloud editing workflows e.g. with DTMaster Stereo



WORKSTATION RECOMMENDATION

- ▶ Up-to-date workstation with at least 64 GB RAM
- ▶ NVIDIA Graphic card is highly recommended
- ▶ Windows®

IMAGERY RECOMMENDATION

- ▶ Digital frame sensors
- ▶ Nadir, oblique or multi-head imagery
- ▶ Imagery with 80% length and 60% side overlap
- ▶ Panchromatic or multichannel sensor

PRODUCT PACKAGE

- ▶ MATCH-3DX Software and license
- ▶ MATCH-3DX Meshing add-on and license
- ▶ MATCH-3DX True-Orthophoto Tile Management Tool
- ▶ MATCH-3DX includes the full capability of MATCH-T DSM. Therefore, both workflows can be used if a MATCH-3DX license is available.
- ▶ **One year maintenance** for the first year to be extended yearly

RELATED PRODUCTS

- ▶ MATCH-AT
- ▶ DTMaster
- ▶ DTMToolkit
- ▶ DPMaster

APPLICATIONS

- ▶ 3D City Modeling
- ▶ Real-estate
- ▶ Court-yard (mapping accident data scenes)
- ▶ Mining
- ▶ Forest management
- ▶ Construction
- ▶ Monitoring
- ▶ Heritage & archaeology
- ▶ Simulation projects (flight simulation and trainings)

PROJECT TECHNICAL CONSIDERATIONS

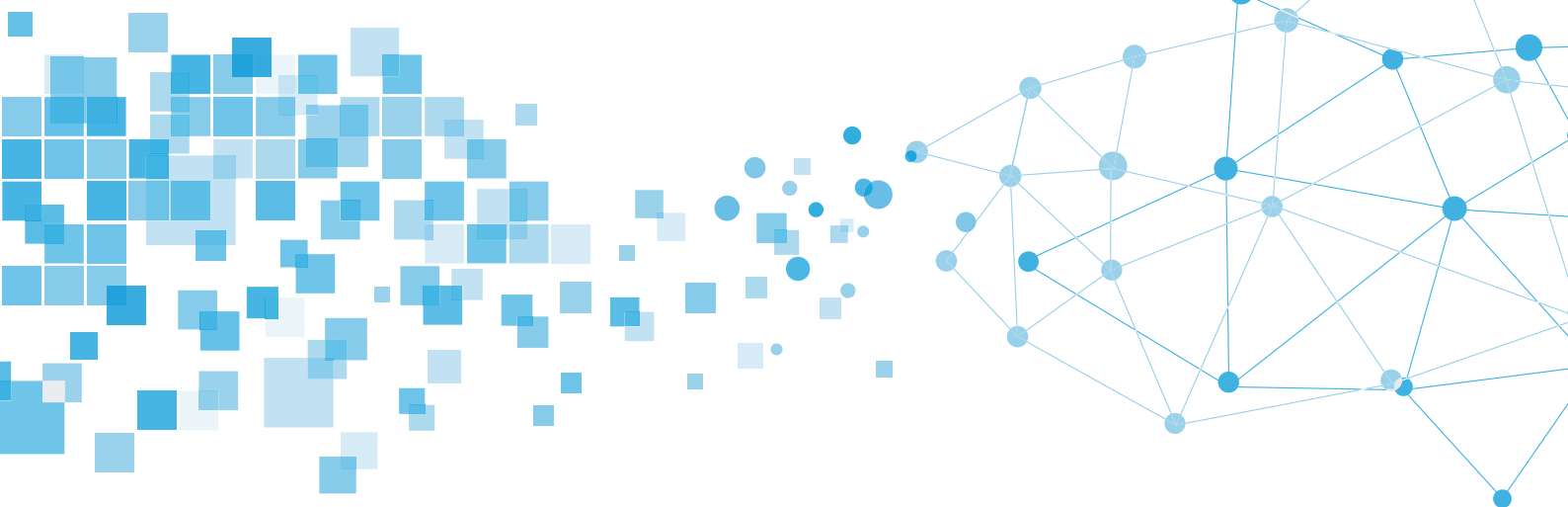
- ▶ Dense point clouds from nadir (SGM 2.5D) and oblique (SGM 3D) imagery
- ▶ True-orthophoto (SGM 2.5D), recommended for highly overlapped imagery (i.e. 80x80)
- ▶ Textured-meshes (SGM 3D or SGM 2.5D) in different formats

Input Data/Formats

Project file	from MATCH-AT
Images	TIFF

Output Data/Formats

Point Cloud	*.las, *.laz
LoD 3D-mesh	*.osgb, *.obj, *.i3s (SLPK), *.ply, *.cesium, *.dae, *.ive
True-Orthophoto	TIFF (GeoTIFF and TiffWorld)



Contact your local Trimble Authorized Distribution Partner for more information

NORTH AMERICA
Trimble Inc.
10368 Westmoor Dr
Westminster CO 80021
USA

EUROPE
Trimble Germany GmbH
Am Prime Parc 11
65479 Raunheim
GERMANY

ASIA-PACIFIC
Trimble Navigation
Singapore PTE Limited
3 HarbourFront Place
#13-02 HarbourFront Tower Two
Singapore 099254
SINGAPORE